



## CASE STUDY

## CUSTOMER

RIO TINTO ENERGY AMERICA

## LOCATION

WYOMING USA / MAR 2008

## EQUIPMENT

CROWD GEARBOX ON P&amp;H 2800XP SHOVEL

## APPLICATION

GEAR OIL

## PROVEN RESULTS



SYSTEMS  
PROTECTED FROM  
WEAR AND QUALITY  
OF OIL INCREASED

## CHALLENGE

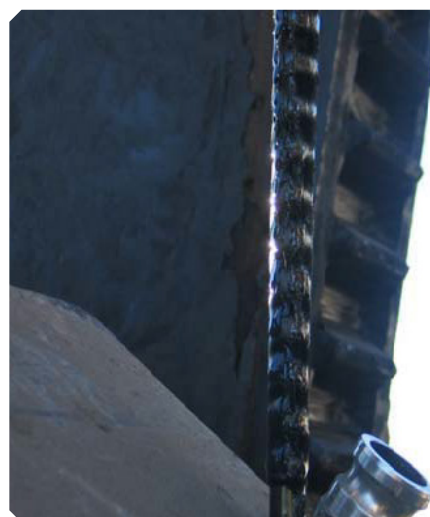
No filtration for the gear oil in the Crowd gear box and increasing levels of ferrous metal contamination are prematurely wearing the components and reducing the lube oil life. Perry Simunek (Maintenance Engineer) was challenged with the task of improving the ISO cleanliness levels on Rio Tinto's Equipment.

## SOLUTION

Install an OEI magnetic filter element in Crowd gearbox during rebuild.

## RESULTS

The ferrous contamination trapped on the magnetic filter represents approximately 800 hours of running time. If left in the fluid these metal particles will prematurely wear the components and degrade the fluid viscosity.



## PRODUCT RECOMMENDATION

**MAGNETIC  
FILTER ELEMENT**



403.242.4221



QUOTES@ONEEYEINDUSTRIES.COM

