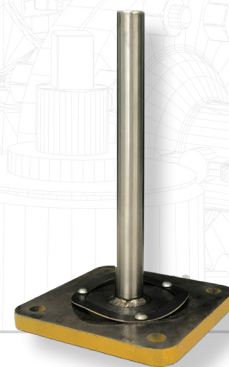


2021

SPECIALTY APPLICATIONS



SOLVING TOMORROW'S CHALLENGES TODAY.

©2021 One Eye Industries Inc. All rights reserved.

ORDERING

OEI DATA FORM

OEI magnetic filters are optimized for fluid viscosity, flow volume, flow rate, temperature, mobility, and mounting requirements. Use of the OEI Data Form will provide the necessary specifications for OEI to determine which product will provide optimal efficiency.

Inquire online at oneeyeindustries.com/order.

PROJECT INFORMATION

Project No.		Application	
Location		Fluid	
Client		Email	
Agent/Distributor		Phone	

PROBLEM / QUERY

--

TECHNICAL DATA

OPERATING DATA		
Operating Pressure		Unit
Operating Temp.		Unit
Max. Flow Rate		Unit
Viscosity		Unit
Liquid Density		Unit
Reservoir Size		Unit

DESIGN DATA		
Design Pressure		Unit
Design Temp.		Unit
Redundancy	Single-pass*	Multi-pass**
VESSEL CONNECTIONS		
	Size (in)	Port Type
Inlet		
Outlet		

ADDITIONAL INFORMATION & CROSS REFERENCES

--

*Single-pass: Fluid will pass through the magnetic filter once; ex. Transfer station.

**Multi-pass: Fluid will pass through the magnetic filter multiple times.

ALL PRODUCTS: OVERVIEW

One Eye Industries offers a series of products designed to help organizations achieve rapid payback with the lowest risk by extending the life of rotating equipment:

- 1 ADD-VANTAGE 9000 SERIES**
 The ADD-Vantage 9000 magnetic filtration system employs a magnetic element and a stainless steel cloth element in its design for high efficiency filtration and replaces conventional spin-on cartridge filters.
- 2 SCRUBBER SERIES**
 OEI Magnetic Filter Scrubbers employ an OEI Magnetic Filter Element in a special housing that ensures maximum dwell time for high efficiency filtration. These systems install on both suction and return lines of low and high pressure applications.
- 3 Y-STRAINER SERIES**
 OEI Magnetic Y-Strainers employ a magnetic filter element as a replacement of conventional Y-strainers. Designs with and without a screen are available.
- 4 FILTER PLUG SERIES**
 OEI Magnetic Filter Plugs employ rare-earth magnets and are the high quality replacement for OEM magnetic drain plugs. These filters are effective predictive maintenance tools when contamination is analyzed to determine component wear.
- 5 MAGNETIC FILTER PAD SERIES**
 OEI Magnetic Filter Pads enhance all spin-on filters by capturing the wear contamination (sludge) < 10 microns that disposable filters fail to remove. These filters extend fluid life by 2 - 3.
- 6 EMERGENCY MAGNETIC PATCH**
 The OEI Emergency Magnetic Patch provides an immediate, temporary solution to pipe wear or rupture by magnetically adhering to surfaces and preventing leakage. This patch helps to prevent unscheduled production.



- 7 SPECIALTY EQUIPMENT DESIGNS**
 OEI offers custom filters for OEM equipment applications such as chain cases, sump filters, transmission plates, pump jacks, and mud tanks. Other OEI specialty designs replace or enhance OEM conventional filters such as CAT, Komatsu, Parker, Schroeder or PALL.
- 8 KIDNEY LOOP SYSTEM SERIES**
 OEI Kidney Loop Systems are self-contained filtration units for offline filtration, fluid transfer of mobile or stationary equipment, and flushing of storage reservoirs. These systems employ multiple magnetic filters for filtration of wear contamination down to 4 microns and below.



SPECIALTY MOBILE APPLICATIONS

OEI offers customers sustainable, higher-efficiency alternatives to OEM magnetic filters, as well as specialty designs that enhances filtration of critical fluids on OEM mobile equipment. OEI designs replacements for all major filter manufacturers like PALL, Parker, CAT, Komatsu, and Schroeder.

OEI patented radial magnetic field design captures wear contamination down to 4 microns and below with up to 95+% efficiency. OEI magnetics are encased in stainless steel and do not fracture and chip, or degrade under temperature and vibration. OEI Magnetic Filter Elements are effective predictive maintenance tools when contamination is collected and sent for analysis to determine component wear and prevent failures.

EXAMPLES OF CUSTOM PROJECTS:



Low grade magnets lose strength under most equipment operating temperatures and vibrations. Often, OEM magnetic filters are manufactured with poor-quality magnets that cannot be encased without losing filtration capability. These magnets often fracture and become more severe wear contamination than the particulates they are intended to remove.



◀ **WHEEL MOTOR LEVEL MONITOR**
OEI offers a two-in-one filtration and oil level monitoring design for wheel motors.

ADD-VANTAGE 9000 MOUNTS

For ease of installation on various OEM equipment, OEI offers various ADD-Vantage 9000 remote mounts to replace OEM spin-on cartridge filters.



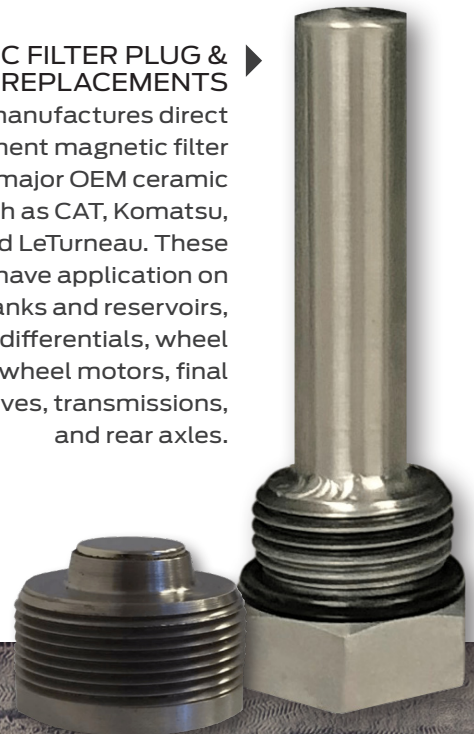
▶ **WHEEL MOTOR LEVEL SAMPLE PORT MONITOR**

This motor is optimized with a sample port to allow operators to extract oil samples without removing the filler cap. This system reduces the opportunity for foreign materials to further contaminate and degrade fluids during sampling.



▶ **MAGNETIC FILTER PLUG & ELEMENT REPLACEMENTS**

OEI manufactures direct replacement magnetic filter plugs for all major OEM ceramic plugs such as CAT, Komatsu, Lieberre, and LeTurneau. These plugs have application on hydraulic tanks and reservoirs, chain cases, differentials, wheel hubs, wheel motors, final drives, transmissions, and rear axles.



SPECIALTY PRODUCTION APPLICATIONS

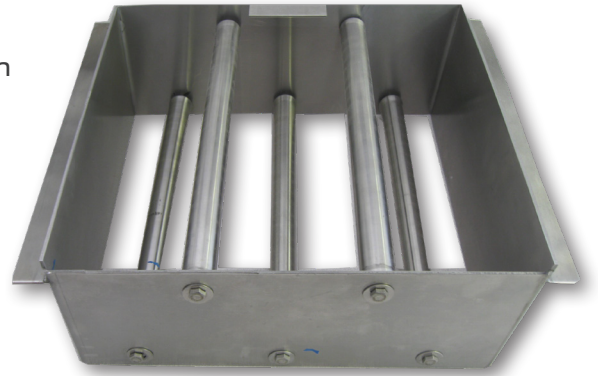


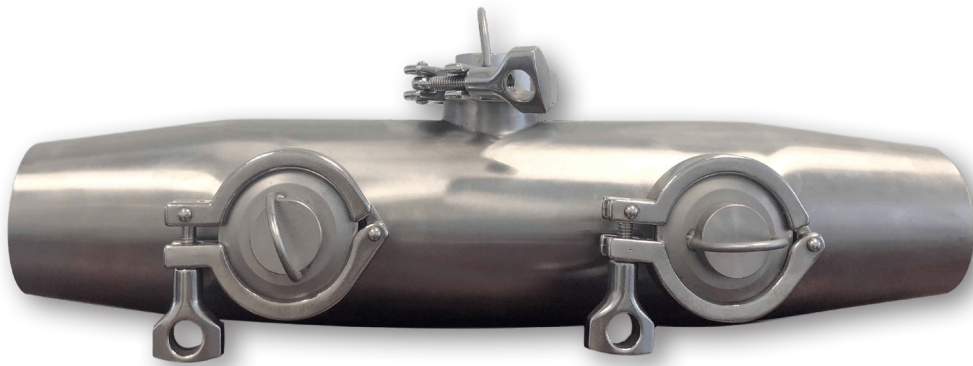
◀ MAGNETIC SWEEPER

The Magnetic Sweeper is a manually operated filter used to remove the built-up contamination (sludge) in existing reservoirs such as hydraulic, fuel, and oil tanks. The flexible fiberglass handle allows for ease of maneuvering and reaching materials in the hardest to reach locations.

DRAW FILTER ▶

Draw filters offer a unique solution for production facilities. The system installs on product lines as a drop chute for product to fall past the magnetic filter elements. The magnetic filter elements capture contamination while product continues downstream. These systems are ideal for processed and fresh foods, minerals, powders, glass, and plastics.



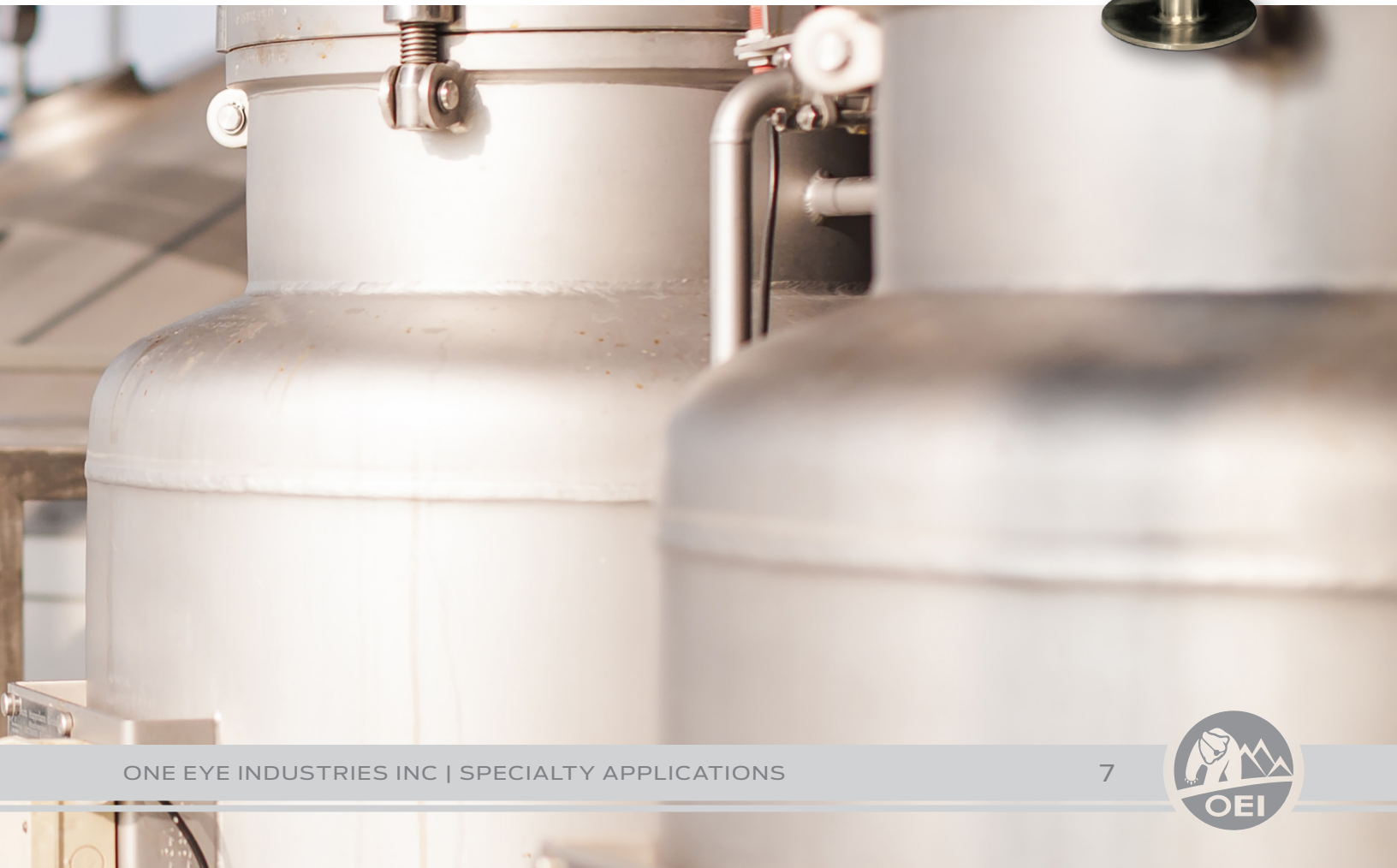


▲ FUNNEL SCRUBBER

OEI offers both industrial-grade and food-grade funnel scrubbers for inline installation on sanitary and process product lines. These filters protect product from loose production materials and contamination that damages system components downstream and degrade final product quality. A variety of sanitary connections are available for ease of installation and service.

MAGNETIC WAND ►

This magnetic filter element acts as a wand for operators to use the force and manually check food quality and product for contamination and loose production materials.





SOLVING TOMORROW'S CHALLENGES, TODAY.

OneEyeIndustries.com
4344 12 Street SE
Calgary, AB T2G 3H9
Canada

403.242.4221
Quotes@OneEyeIndustries.com