



CASE STUDY

CUSTOMER

FORDING RIVER COAL

LOCATION

BC CANADA / MAR 2011

EQUIPMENT

KIDNEY LOOP FILTRATION

APPLICATION

LUBE OIL

PROVEN RESULTS

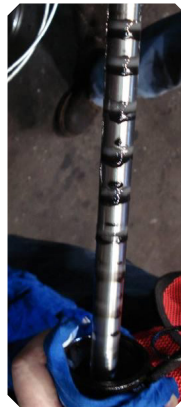
INCREASED FUEL QUALITY

CHALLENGE

Identify if the filtration by traditional depth media paper filters (7 micron rated) was filtering the oil efficiently.

SOLUTION

Install an OEI magnetic filter scrubber as a final filter on the kidney loop filtration system.



RESULTS

The second photo displays the trapped contamination both ferrous and non-ferrous that the traditional filters failed to remove from the oil. The contamination from 10 micron to submicron in size was analyzed; the results are shown below on the third photo. The traditional filters are allowing ferrous and non ferrous contamination to remain suspended in the oil that is returned to the wheel motor.

| Sample Number | Sample Date | Contaminants ppm | | Wear Metals ppm | | | | | |
|---------------|-------------|------------------|---------|-----------------|--------|--------|------|-----|----------|
| | | Potassium | Silicon | Aluminum | Iron | Copper | Lead | Tin | Chromium |
| 1328 | 2011/03/17 | 4608 | 25671 | | 259240 | 16930 | 196 | | 2080 |

| Sample Number | Sample Date | Additives ppm | | |
|---------------|-------------|---------------|------|-----------|
| | | Calcium | Zinc | Magnesium |
| 1328 | 2011/03/17 | 7102 | 5010 | 231 |

PRODUCT RECOMMENDATION

MAGNETIC FILTER SCRUBBER

403.242.4221

QUOTES@ONEEYEINDUSTRIES.COM

