



## CASE STUDY

CUSTOMER

MITSUBOSHI BELTING

LOCATION

SINGAPORE / FEB - MAR 2015

EQUIPMENT

CALENDARING SYSTEM

APPLICATION

BOILER FEED WATER

PROVEN RESULTS



REDUCED NEED FOR CHEMICAL FLUSHING

INCREASED UPTIME AND RELIABILITY

### CHALLENGE

Improve water quality to sustain consistent heating of the calendar roll's internal chamber to ensure quality rubber for transmission belt production.

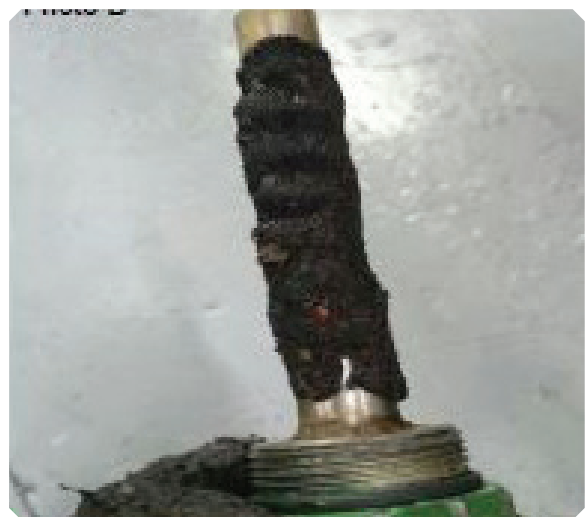
Corrosion in the hot water pipes was causing inconsistent heat transfer within the calendar roll's internal chamber. The uneven temperature on the surface was causing poor quality rubber profile and finishing of the manufactured transmission belts.

### SOLUTION

Install an OEI magnetic y-strainer before the hot water inlet to the internal chamber.

### RESULTS

The photo shows a large amount of ferrous and non-ferrous contaminants captured by the magnetic filter rod after one week of operation.



PRODUCT RECOMMENDATION  
**MAGNETIC FILTER Y-STRAINER**



403.242.4221



QUOTES@ONEEYEINDUSTRIES.COM

