



## CASE STUDY

## CUSTOMER

PT. SURYA TOTO

## LOCATION

TANGERANG - WEST JAVA, INDONESIA / 2009

## EQUIPMENT

MESIN GENERATOR

## APPLICATION

DIESEL FUEL

PROVEN  
RESULTSDIESEL FUEL  
PUMP  
AND  
INJECTORS  
PROTECTED

## CHALLENGE

Reduce wear contamination in the generator's diesel fuel that was causing damage to the injectors and pump. Conventional filters have been ineffective in capturing contamination under 20 microns due to worm holing and channeling.

Wormholing: when wear contamination punctures the filter media.

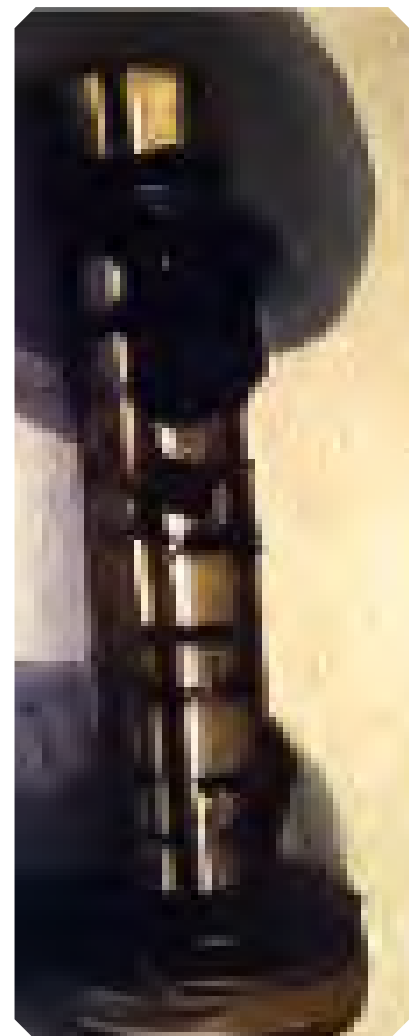
Channeling: when fluid flows through punctured filter holes taking the path of least resistance.

## SOLUTION

Install an OEI magnetic filter y-strainer prior to the conventional filters. OEI filters eliminate wormholing and channeling that conventional paper, fiberglass, and polymer media filter elements are prone to.

## RESULTS

This photo shows the results after one week of running the generator.



PRODUCT  
RECOMMENDATION  
**MAGNETIC FILTER  
Y-STRAINER**



403.242.4221



QUOTES@ONEEYEINDUSTRIES.COM

