



## CASE STUDY

## CUSTOMER

COAL PRODUCTION FACILITY

## LOCATION

GILLETTE, WY USA / 2009

## EQUIPMENT

COAL LOADING GATE

## APPLICATION

GEARBOX LUBE OIL

## PROVEN RESULTS



EXTENDED  
LUBE-OIL  
AND  
GEARBOX  
OPERATING LIFE

## CHALLENGE

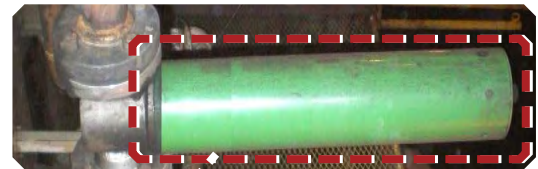
Silo gearboxes controlling the shoot gates that load the trains with coal had inadequate filtration that only captured contamination down to 20 microns in size. Kinneco Energy required an OEI magnetic filter to capture wear contamination down to 4 microns and below to reduce premature wear of bearings and other close tolerance components.

## SOLUTION

Install an OEI ADD-Vantage 9000 in the gearbox. The ADD-Vantage 9000 includes OEI's patented magnetic filter element as well as a stainless steel cloth element. The "inside-out" flow control design operates with the magnetic filter element as the primary filter. The high holding capacity allows for extended operating life of the stainless steel cloth element which minimizes by-passing and extends cleaning intervals

## RESULTS

A significant amount of ferrous and non-ferrous contamination was captured by OEI magnetic elements. This system has proven to surpass traditional filtration and extend both lube oil and gearbox life.



PRODUCT  
RECOMMENDATION  
**ADD-VANTAGE 9000**



403.242.4221



QUOTES@ONEEYEINDUSTRIES.COM

